

TOGETHER WE CAN

2023 IMPACT REPORT



TABLE OF CONTENTS

CHAIRMAN'S REPORT	PAGE 1
DIRECTOR'S REPORT	PAGE 2
DEVELOPMENT OF CHILDREN WITH DISABILITIES	PAGE 3
SUCCESS STORY	PAGE 4
RESPITE PLAY & LEARN	PAGE 5
THERAPY PROGRAMME	PAGE 7
PARENT SUPPORT	PAGE 9
AWARENESS & ADVOCACY	PAGE 10
INCLUSIVE ECD HUBS & UGU EXPANSION	PAGE 11
RED FLAG & CATCH-UP	PAGE 12
SUCCESS STORY	PAGE 15
EARLY LEARNING PROGRAMME	PAGE 16
SUCCESS STORY	PAGE 18
SIYASIZA SPOTLIGHT	PAGE 19
FINANCIAL OVERVIEW	PAGE 20
2024 GOALS	PAGE 21

LIST OF ACRONYMS

ECD Early Childhood Development
SEN Special Educational Needs
OT Occupational Therapy/ist
PT Physiotherapy/ist
SALT Speech and Language Therapist
ASD Autism Spectrum Disorder
CP Cerebral Palsy
CDG Care Dependency Grant
SASSA South African Social Security Agency
IT Inclusion Tool
M&E Monitoring & Evaluation

DEFINITIONS

Siyasiza Siyakwazi community-based fieldworker

CHAIRMAN'S REPORT

To all Siyakwazi's stakeholders and interested parties,

Once more, 2023 has been a year to highlight growth and stability within Siyakwazi. As we look back on the past year, we are proud to see how the programmes have positively impacted the community, which you will hear more about within this report. Siyakwazi's unique projects and interventions have supported equipping more children with disabilities and children at risk of falling behind to reach their full potential. Siyakwazi has consolidated its operating base during the 2023 year and budgets indicate an encouraging increase in operating activities in the forthcoming year. Each year, Siyakwazi aims to progress and refine how they work. In addition to carrying out work in the upcoming year, they are eager to use this opportunity to evaluate and enhance the advancements that have been achieved in 2023. We wish all staff and those whom Siyakwazi integrate a successful 2024.

Sadly, Elizabeth Cook, a very important committee member, will be leaving us this year. Beth has been a vital contributor and part of Siyakwazi from its inception. She has demonstrated a strong dedication to the organisation and its objectives, as well as to helping the director form alliances with businesses that offer learnerships and making sure Siyakwazi staff members are qualified and developing in their positions. She also provided support and oversight into finance in her key role as treasurer. We reluctantly bid Beth farewell, but we hope she succeeds in everything she does going forward.

We understand that none of this would be possible without the continued attention and support of businesses, funders, grant makers, individual donors, and other resource partners. I want to personally thank each of you for your contributions and dedication. I would especially like to thank Cathy Mather-Pike, the Director of Siyakwazi, and the entire staff for making sure that the organisation's distinctive interventions for all children in the KwaNzimakwe and KwaXolo areas continue. I'm grateful to everyone.

RORY O'DONNELL
CHAIRMAN

DIRECTOR'S REPORT

Siyakwazi is committed to fighting exclusion. Our efforts to promote inclusion of children with disabilities are aimed at addressing systemic challenges within the education system in South Africa.

In 2023, we remained steadfast in our mission to unlock the potential of children with disabilities. Throughout the year, the team diligently delivered our programmes with care and compassion, striving to achieve excellence in all aspects of our work. Additionally, we introduced two significant initiatives to our programmes. Respite Play & Learn offers a vital reprieve for guardians of children with severe to profound disabilities, providing them with much-needed respite while offering these children access to a stimulating learning environment. We have also begun efforts to expand inclusive practices in ECD centres beyond our current area of operation with a goal of scaling inclusion in ECD, thereby fostering inclusion of children with disabilities district-wide. This expansion initiative will continue into 2024 and beyond and is a collaboration with long-standing partner, Impande South Africa - we are truly grateful for their guidance and support.

As part of our commitment to upholding ethical standards, we have prioritised the enhancement of our safeguarding policies and procedures, ensuring the safety, dignity, and respect of the vulnerable groups we serve.

I wish to express sincere gratitude to the parents, staff, financial partners, and resource partners whose unwavering support has been instrumental in our endeavors over this last year. A special thank you to Siyakwazi's committee for your support and guidance in fulfilling our mission, and thank you to the new members who have joined in the last year, we look forward to your contributions to our cause.

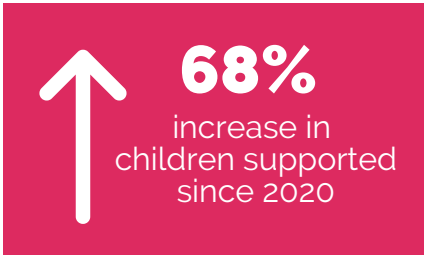
As we reflect on the achievements of 2023, we remain determined to continue making a meaningful impact in the lives of those we serve, and we eagerly anticipate the opportunities and challenges that lie ahead in the coming year.

CATHY MATHER-PIKE
DIRECTOR

DEVELOPMENT FOR CHILDREN WITH DISABILITIES

121





CHILDREN WITH DISABILITIES SUPPORTED WITH INTERVENTIONS IN 2023



In our early years Siyakwazi's Inclusion programme was developed to offer support for families and children with disabilities at home, supporting those excluded from any type of educational facility. In those early years of operation 20-30 children would be supported. Since then, the programme has increased its reach in many ways. Now we support children with disabilities in schools and ECD centres in addition to those children who are in their homes. The programme's ethos lies in building relationships with families and providing a holistic approach that takes into account the support needed when raising a child with a disability. We are pleased to report that 2023 saw implementation of a wide range of recommendations, all of which emerged through our 2022 research findings. These additions have not only supported our programmes to grow in reach but, more importantly, they have improved the quality of implementation.



Top 4 prevalent disabilities 2023

	Diagnosed	Suspected Diagnosis	% of total
 Cerebral Palsy	26	1	22%
 Autism Spectrum Disorder	11	6	14%
 Speech Delay		10	8%
 ADHD/ ADD	2	8	8%

3975 home visits were conducted by Siyasizas for children with disabilities in 2023



AFIKILE'S SUCCESS STORY

Afikile* (2) was born premature and with complications that led to her diagnosis of cerebral palsy at an early age. Her developmental progress followed an unexpected timeline so her parents, confused and without any meaningful knowledge of her condition, reached out to local clinics for support.

It was at one of these clinic visits in 2022 that our Siyakwazi team met Afikile - at only 9 months old. Siyakwazi has supported Afikile and her family ever since, providing therapy input, resources, education, appropriate stimulation and support at home - and we have seen tremendous progress in her gross and fine motor skills. Afikile is now a proud walker, independently getting around and happiest when exploring her world on her own two feet.

Cerebral palsy impacts muscle strength, mobility and control. Much of the intervention for Afikile has centred on therapy, including achieving physical goals like sitting upright and walking. When she joined the programme, she could confidently grasp at objects and lift her head when lying on her tummy. Working with these strengths, we added playful activities, stretches and exercises to her tailored therapy plan that would allow her to practice core stability and other important foundational skills for independent movement.

At home, Afikile's family worked with her every day always taking advantage of the Siyasiza's home visits to try new things and following Afikile's therapy plan as best they could. Afikile also received a standing frame and a corner chair through Siyakwazi's partnership with Timion NPC which helped her learn to sit and stand at home, making everything she was doing at her regular therapy sessions even more effective. At the end of 2023, Afikile participated in Block Week with her grandmother completing five intensive days of therapy and education at the Siyakwazi Resource Centre. Both came away with valuable lessons and skills - Afikile has grown in leaps and bounds, and her grandmother has a new outlook on disability that is truly transformational. Afikile and her family are a true testament to so many of Siyakwazi's core values - the importance of early intervention, the value of family participation, and how a holistic approach to supporting disability can help a child to run their own race.

"Ngiyabonga kakhulu into uSiyakwazi oyenzele umntanami nezinto osifundisa. Ufike kunzima ngisho ukwamukela kumawakhe kodwa manje siyawubona umehluko futhi sesiqeqeshekile ngendlela yokusiza u Afikile." / "I am grateful for the support our family received as it has helped us accept Afikile's disability and now we understand her condition better and how to support her."

RESPITE PLAY & LEARN

Older children with disabilities who have 'aged out' of Siyakwazi's existing programmes now have the opportunity to participate within an educational and stimulating environment adapted to their needs.

Many children with disabilities remain hidden away at home, missing opportunities for learning and growth. The overwhelming responsibility to appropriately care for children with severe to profound disabilities is, in the truest sense of the word, burdensome. Guardians not only risk burnout and caregiver fatigue, they often lack awareness of the untapped potential within these children to learn, function, communicate and participate alongside their peers. With this in mind, Respite Play & Learn was formed as a preventative intervention designed to support overworked guardians, to help them feel seen, understood and supported - and ultimately, to offer respite.

For children with severe to profound disabilities, where school is unfortunately not an option, these playgroup sessions provide one-on-one interaction, stimulation, functional education and care alongside their peers. Hosted at Siyakwazi's Resource Centre, it's an opportunity for these children to interact in an outside ... [continued]

"As Siyabonga's* aunt, I am so happy that at times you come and fetch him [for daycare]; it gives me time to work on the other things in my life. I have time to do washing, go do errands or go to the mall. We love daycare here at our household because we also get time off to rest and be able to do other things that the household needs."



environment without the oversight of their guardians, and for them to participate in learning no matter the severity of their disability.

Siyakwazi's Inclusion programme coordinator and Therapy team combine activities into a classroom curriculum for the group, and each child is given individual, achievable learning goals and opportunities for progression despite their disability. Each week music and movement, visual stimulation, outdoor play and - of course - lots of fun games are on the agenda. Every child is also given specialised positioning equipment and assistive devices to ensure they are able to participate comfortably and happily to the best of their ability.

In addition, every child is assigned a fieldworker who travels with them to-and-from the Resource Centre in Siyakwazi-arranged transport, and whilst in our care we provide all meals and meet all the child's needs as their caregiver usually would.

We started with 10 children, once-a-month, and now as funding and capacity has increased Siyakwazi's Respite Play & Learn hosts 15 children twice-a-month. While we appreciate this initiative is expensive - in time, resources, staffing and logistics - it is incredibly worthwhile.



"I have attended therapy Block Week at Siyakwazi for cerebral palsy and have also done the Malumalele Onwards training, which have supported me in my role in working with the Respite team. In doing activities we use good positioning and the positioning equipment to make sure the children are comfortable. Each child has their own portfolio that helps us to understand their disability better as well as their strengths and weaknesses. Most of the parents are highly appreciative of our service and have asked if we can support more days. It helps them [the parents] to get a break so they can do their chores at home and they also like to see progress in children."

Vero, Siyasiza supporting Respite team

THERAPY PROGRAMME

Therapy services at Siyakwazi play a significant role in our holistic approach to supporting children with disabilities. Siyakwazi's Therapy programme considers the unique abilities of each child, their condition and how to best support them in their individual journey.

Our aim is to ensure that every child has the opportunity to move on in their development, strengthening areas of weakness and practicing newfound skills. Through our physiotherapy, speech and language therapy, and occupational therapy services - offered at Siyakwazi's Resource Centre and within homes - we see most children achieve personal goals, grow in confidence and enjoy greater levels of overall wellness.



of children supported by Siyakwazi's Therapy programme



Access to services



13 children access SEN schools



18 children supported accessing diagnosis including 11 children accessing diagnosis through a private psychologist assessment from Siyakwazi



19 children accessed assistive devices of which 84% of devices were provided by Siyakwazi or Siyakwazi's partners (Timion)



7 families of children with disabilities successfully supported accessing the Care Dependency Grant (CDG)

SUPPORT FOR REFERRALS

Siyakwazi has improved overall access to services and communication with local clinics and hospitals, including with commserve therapists who regularly change. Collaborations with local SEN schools have also achieved a milestone, equipping parents with valuable information, and supporting access to assessment and enrollment processes for children with disabilities (who were previously facing challenges in accessing mainstream education support). Additionally, our support in securing official diagnoses and Care Dependency Grants remain critical aspects of enhancing service access.



"Mlungisi has been supported by Siyakwazi's Inclusion programme since 2016. Unfortunately he was excluded from attending the local ECD centre. This is his first year attending school. It is really encouraging that the family persevered and now he has the opportunity to participate and learn at school."*

30 children with disabilities have been supported accessing SEN schools in the last 3 years

NOTABLE MILESTONES FOR SIYAKWAZI'S THERAPY PROGRAMME

- Better relationships and continuity with commserve therapists at local clinics
- Outreach and relationship-building with local hospitals, including project collaborations and training opportunities for therapy assistants
- Two intensive 5-day Block Week interventions (CP and ASD)
- Enhanced support for children accessing services of private psychologists (assessment and diagnosis), as well as Timion positioning equipment and assistive devices

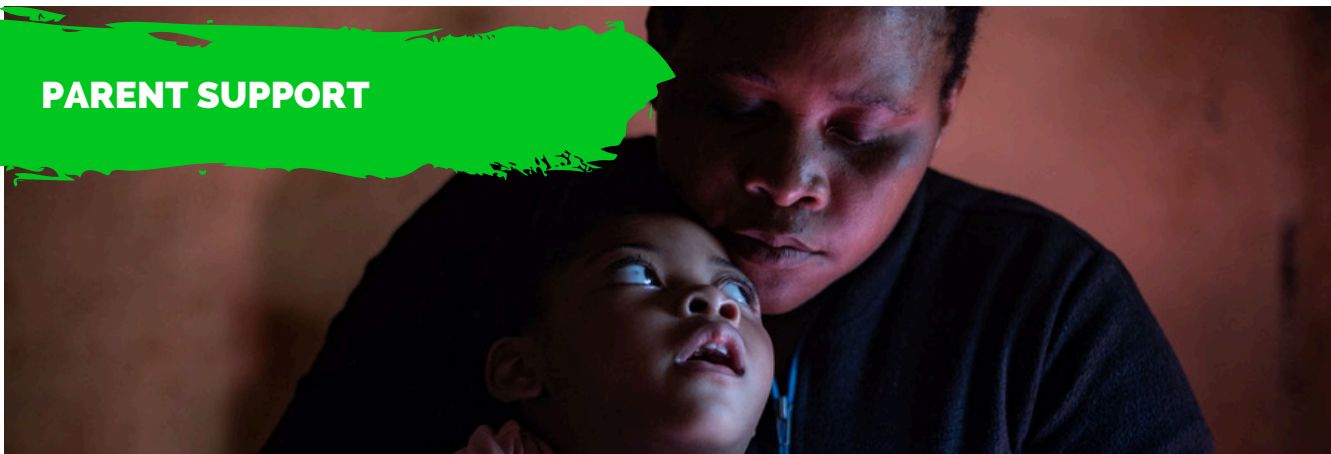
#PROJECTACCESS

We are excited to announce the launch of a new project in 2024, which is an extension of our Therapy programme. #ProjectAccess will be a collaboration between the therapists at Port Shepstone Hospital and Siyakwazi's own therapy team in order to determine a way forward in supporting community healthcare workers to promote services for children with disabilities.



"As a physiotherapist at Port Shepstone Regional Hospital in KZN, I am encouraged to be working alongside an organisation like Siyakwazi to develop ways for our therapy team to better support the community. Working alongside organisations who have existing relationships with families - and who specifically focus on areas of disability - means that services available through local clinics and hospitals can reach the children who need them. Furthermore, an opportunity to foster a sense of inclusion amongst our Community Healthcare Workers and disability awareness will ensure that these services are made available to those in the most rural of settings. I am excited to see how the relationship with Siyakwazi will support learnings on both sides ensuring better support to families and children with disabilities."

PARENT SUPPORT



Continuing from the learnings of our research project in 2021/2022, Siyakwazi conducted a follow up analysis with a sample of parents who had participated in the initial research. The impact of the Inclusion programme in strengthening parents' confidence and understanding in supporting their child was at the forefront of this analysis.



all parents now feel supported at follow-up

- 100% Parents noted positive changes in their own behaviour and strengths
- 100% Parents feel they now understand the challenges their children deal with on a daily basis - due to Siyakwazi support
- 100% Parents are now able to identify and vocalise their children's strengths
- 100% Parents know how to support their children by communicating better, being aware of individual challenges, helping them follow therapy and professional advice, and understanding their children better in general
- 100% Parents reported improvements in physical capabilities, communication, attitudes, and daily activities of their children

“Siyakwazi helped me understand my child better and know how to take care of him.”

“He feeds himself, goes to the toilet by himself, and can bathe himself.”

“My child is growing cognitively every day, he learns every day.”

“He does not fall as much as he used to and I make sure he eat dietician-recommended food.”

“He started opening up on speech and is now able to play games and pay attention to things.”

“I am now aware of his challenges and how to take care of those challenges.”

“Siyasizas help my child with so many activities.”



One of Siyakwazi's long-term goals is increasing relationships and visibility of our programmes within local government. This has involved actively seeking out individuals within district government departments in order to introduce or reintroduce Siyakwazi and share the work we do. One of these opportunities has been through a local ECD forum network, which was established by the Ugu Department of Education, to facilitate a gathering of organisations within the ECD space. The forum was established in March 2023 and involves termly meetings.

Ugu's head of transition from ECD to DoE, Mrs Mbotho shared a story about inclusion, disability and mainstreaming, which she witnessed when visiting one of the ECD centres supported by Siyakwazi.

"When I was visiting the creche, I was amazed on how a young man working with a child with disability was participating in the classroom, not just any disability but a (obvious) physical disability. Thank you Siyakwazi, you are doing wonderful work."

The child being supported in the Inclusion programme has cerebral palsy, and through Siyakwazi's support and encouragement has been attending the local ECD centre for the past 18 months. Siyakwazi has provided an assistive device to the ECD centre which supports the child's positioning and enables him to participate.

It is wonderful for us at Siyakwazi to hear this positive feedback from DoE. We know that when disability mainstreaming is driven from leadership, it will support more children with disabilities to access local ECD centres.

**21 CHILDREN UNDER
6 YEARS NOT ATTENDING
ECD IN 2023**



INCLUSIVE ECD HUBS UGU EXPANSION



Siyakwazi supports 24 ECD centres and 16 children with disabilities attending these centres in KwaNzimakwe and KwaXolo in Ugu. But over time we believe we could reach more than 350 ECD centres in the wider Ugu district through collaboration with Impande South Africa's ECD practitioner network.

In 2023 we created a framework for upskilling ECD practitioners to do the work of our fieldworkers remotely. ECD practitioners outside of our catchment were given Siyakwazi tools, training and mentorship for a 12-month period, and together we identified and supported children with disabilities who may have otherwise been overlooked.

"Siyakwazi opened my eyes on disability, and on how to involve [children with disabilities] in the classroom. The laddering activities, intake tool, autism document and knowledge I received from this programme helped me to understand children with disabilities and inclusion." - ECD Practitioner

Our dream is to see every ECD centre in Ugu functioning as a hub for inclusion with 'Inclusion Champion' ECD practitioners who are equipped and confident to support children with seen and unseen disabilities aged 0-5.

Early intervention at this crucial age of development will provide the strong foundation needed for transitions into primary school, and ultimately enable all children to reach their full potential.

Our initial aim is to pilot 20 ECD centres and learn from this experience to expand Inclusive ECD Hubs across Ugu. Additional project goals include:

- Providing inclusion training and tools to ECD practitioners through Impande's learning groups.
- Establishing a chatbot helpdesk for remote assistance to ECD practitioners.
- Delivering onsite mentorship via our fieldworkers.
- Developing and implementing a user-friendly digital monitoring and evaluation system.



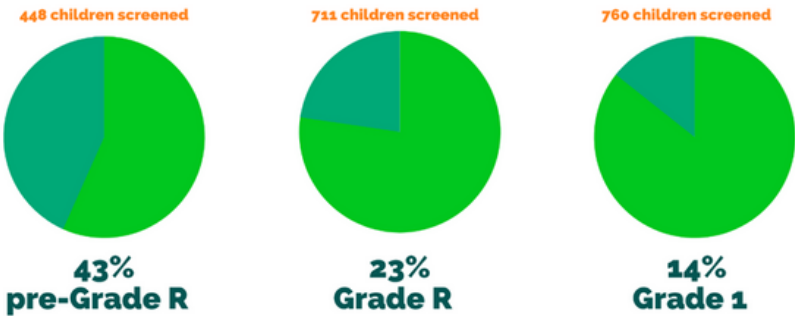
RED FLAG & CATCH-UP



2 in 11

children 4-7 years at risk of falling behind in 2023

In 2023, approximately two out of 11 children screened were found to be at risk of falling behind. With the highest % in pre-Grade R (ECD centres). This year has been the sixth year of implementing the School Readiness Red Flag and Catch-up programme since its pilot debut in 2018. The graph set indicates the number of children screened per age group, and the percentage of children identified at risk of falling behind in each one. Altogether, a total of 31 learning institutions were supported with the Catch-up programme (9 Primary Schools and 22 ECD centres).



Similar trends in weak areas of development

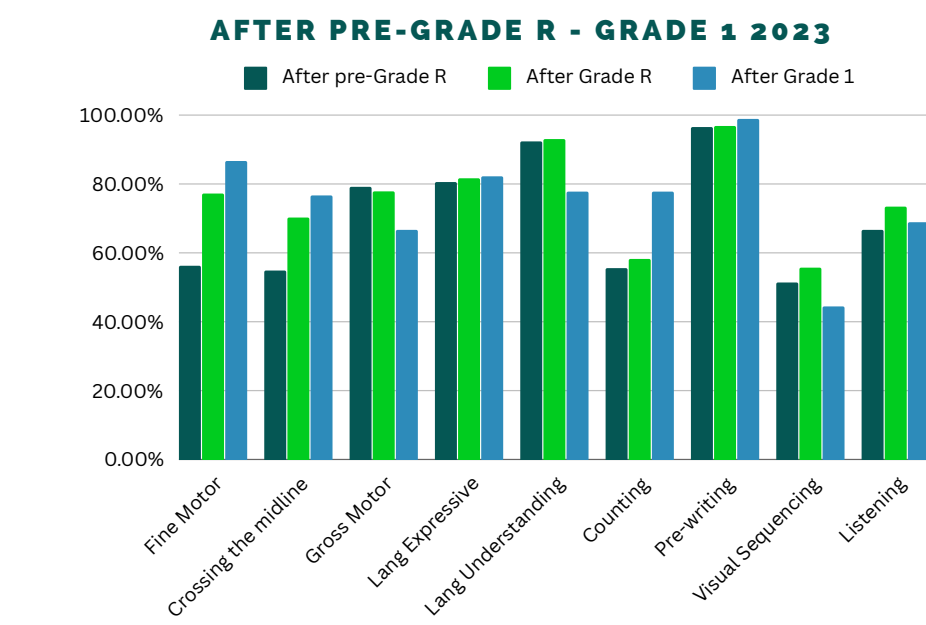
Areas of development which remained weakest also showed a similar trend to previous years. Activities highlighted counting and visual sequencing as the lowest scored in terms of percentage achieved across all three age groups.

“Siyokwazi plays an important role to our children because some of them we didn’t notice that they have a learning difficulty, but when the Siyasiza came those kids were noticed and got the necessary help and have improved.” - Teacher feedback

471 children were supported through the Catch-up programme in 2023 after being identified at risk of falling behind. Interestingly, after closing the chapter on the Covid-19 pandemic years of 2020 and 2021, we have seen a steady decrease in the number of children identified as Red Flag. This is encouraging as it highlights that we are no longer dealing with an unusual and different to the norm learning landscape.:

59

teachers supported in schools & ECD

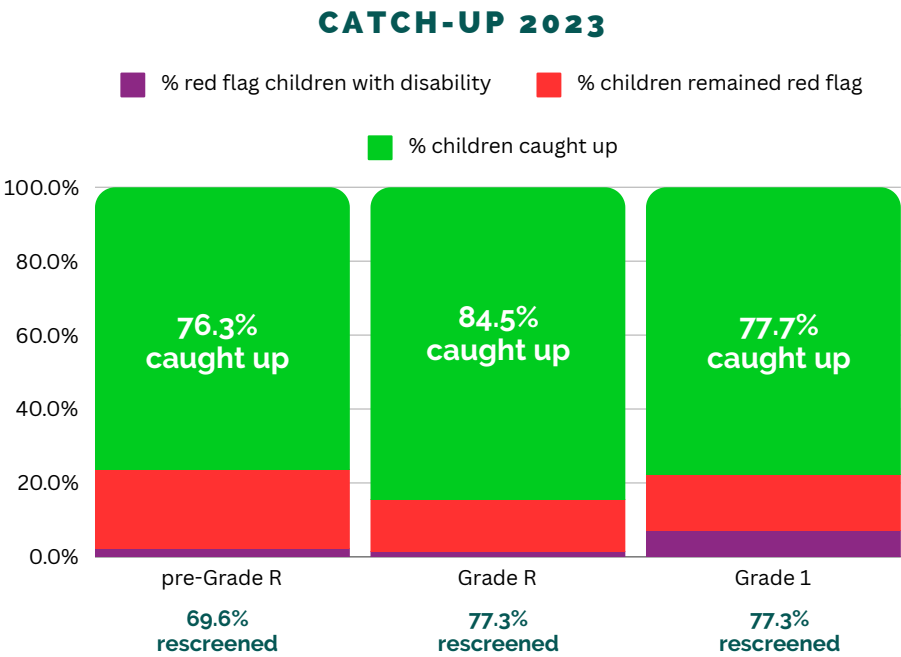


AREAS OF DEVELOPMENT

The above graph highlights the after achievements across each age group and gives insight into the various areas of development which have strengthened, as well as those which remain a challenge. Observing the progress across the age groups, **fine motor and visual sequencing marked the most notable improvements in pre-Grade R and Grade R. Grade 1 demonstrated a substantial 191% improvement in counting skills** through targeted activities. However, challenges persist in pre-Grade R, particularly in fine motor, midline crossing, visual sequencing, and counting skills, requiring ongoing focused interventions.

The relationship across all age groups with strong pre-writing skills (pincer grip) and weak visual sequencing highlights the gap that is seen with children struggling to read and write as they get older. Without the ability to complete patterns, the formation of letters in a specific sequence can be a challenge and remains an area where focus is needed.





The above graph demonstrates the number of children who caught up in their learning across the different age groups. Most notably the **percentage of children catching up in 2023 was lower than 2022**. [Catch-up rates for Grade R and Grade 1 were lower than 2022. (However, Pre-Grade R catch-up results remained the same as 2022.)]

We believe lower Catch-up rates to be a combination of several factors, including:

- Children identified in 2023 may be more likely to have an underlying condition.
- Parent denial and lack of acceptance prevented Siyasizas from incorporating children with suspected disabilities into Siyakwazi's Inclusion programme.
- Teacher lack of understanding of early intervention meant that often younger children identified with a potential learning disability are not supported as holistically based on the assumption that they will 'grow out of their challenges'.
- Actual numbers of children caught up are not significantly different to last year which showed higher percentage of children identified as Red Flag.

Siyakwazi's M&E tools, which support the Red Flag and Catch-up programme, have been key in supporting an in-depth analysis of the before and after findings - not only amongst different age groups, but also amongst different educational facilities. This deep insight into the programme will support a more tailored learning experience as we continue to implement the programme, supporting both increase in quality of the programme as well as reach.

282
children under 7 supported to catch-up in their learning in 2023

“The resources that Siyakwazi provided us with helped us a lot with OT skills. They benefited us because we’re able to use balls to throw and catch. We use lego to build towers and they communicate well while building.” - Teacher feedback

MTHINI PRIMARY SCHOOL



65

children supported to Catch-up in their learning in Grade R and Grade 1 at Mthini Primary school in 2023

"As a teacher I am even learning from Siyakwazi, watching the Siyasizas I can see 'oh I need to improve on this or I can implement that thing'. One of our challenges is that we have large number of children in each class and the curriculum is very broad. There is a lot of work to get through in the year and so we are unable to support children one on one."

Siyakwazi began working with Mthini Primary School in 2020. Mthini were the second school supported in the kwaXolo tribal authority following the expansion of our services to the area. Over the years Mthini has remained one of the schools with the highest number of children identified at risk of falling behind, both in numbers and as a % of children screened.

2023 was no different with the highest % of children identified as Red Flag in Grade R and second highest % in Grade 1. A total of 79 children at risk of falling behind at the start of the year meant the work to implement Catch-up activities was no easy task and required two Siyasizas to support the programme implementation. Penny and Msizi worked together, taking children in small groups to conduct the Catch-up sessions and do more focused activities. Mthini provided a separate class where these sessions could take place.

"We have two learners who are not interested in learning but when they come back with so much energy and excitement from the Catch up group," says Miss Xolo, a Grade 1 teacher. **Teachers also noted that children enjoyed working with puzzles, they described how children would become excited and crowd around the tables when they saw Penny and Msizi with the puzzles.** "The Siyasizas would split the children into smaller groups and make sure that they each had a turn. It was very well organised." Described Mrs Malishe, another Grade 1 teacher and also the HOD. "As a teacher I am even learning from Siyakwazi, watching the Siyasizas I can see 'oh I need to improve on this or I can implement that thing'. One of our challenges is that we have large number of children in each class and the curriculum is very broad. There is a lot of work to get through in the year and so we are unable to support children one on one."

We would like to acknowledge the effort from Mthini in supporting the implementation of Siyakwazi's programmes. This year they achieved a remarkable 80% Catch-up rate in Grade R and 88% Catch-up in Grade 1.

EARLY LEARNING PROGRAMME

138 Parents and their babies between 0-30 months participated in the 0-2 years Early Learning programme

Siyakwazi's Early Learning programme has continued to show growth in 2023, notably, a new addition to the programme has been the creation of age-appropriate baby bags for children aged 0-6 months, featuring soft toys like owls and balls (manufactured through Siyakwazi's sewing hub), and a shaker.

Through our home-based interventions in the Early Learning programme we have noticed the following:

- Improved awareness of children's ability for early learning
- Increase in parent's willingness to participate in ECD
- Parents are implementing the programme in homes
- Increased access to toys improves learning
- Early identification of delayed milestones = increase referral for intervention

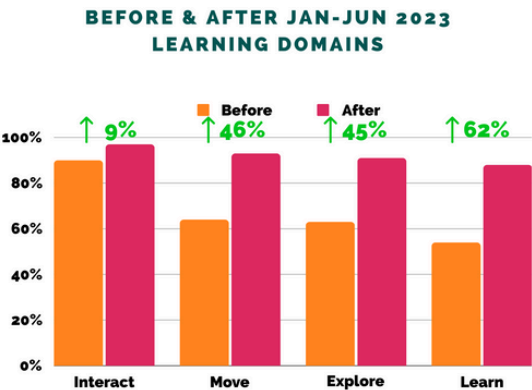
"Now she can do different things and is able to play with other children better. I have made a difference to my child's development by helping her to speak and spending time playing with her with her toys." - parent feedback

96% of parents improved or stayed the same with only 4 parents regressing in both the Jan-June & June-Dec before & after assessments



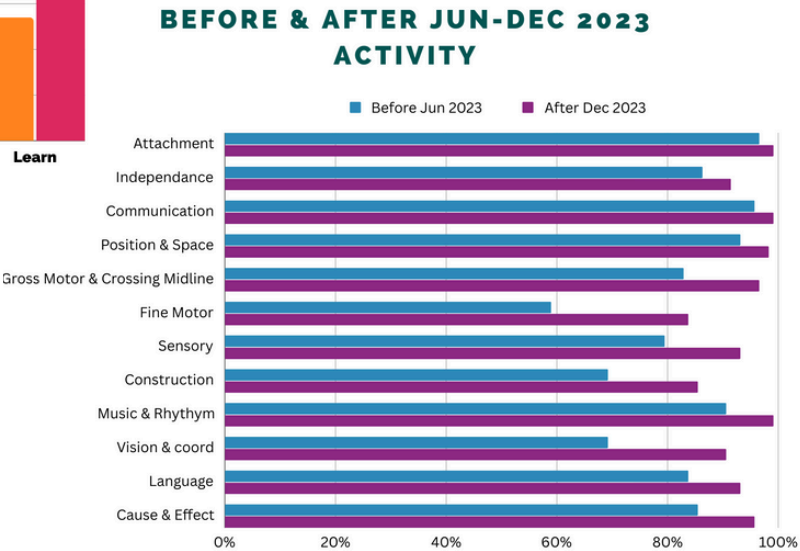
There were a number of common themes which emerged through the analysis of feedback collected from parents. Some which were prominent included **children's ability to learn how to do activities independently, children learning how to play with other children as well as how to share resources/ toys.** In certain cases parents noted that their children were able to assist with some of the house chores or that their child had learnt to dress themselves. These are important skills that support the independence of a child and create the basis for social and emotional learning which is critical in ensuring a smooth transition into ECD centres.

"The activities have been eye opening to me and taught me a lot on how/what to teach my child. The resources have been very helpful to him to play while learning". - parent feedback



The graph on the right highlights the range of analysis that can be achieved through information collected as it shows the before and after associated with each question/ learning activity across the different age groups. The notable improvements here were for fine motor and vision & coordination related activities,

There was a significant difference across all 4 learning domains in the Before and After assessments for Jan -June 2023. The data highlighted that parents are already doing well in Opportunities to Interact activities at baseline (before).



MOST IMPROVED QUESTION: 172% INCREASE CONSTRUCTION activities
"Activities measured across the different age groups included: Manipulate different objects; Practise building blocks; Practise stacking; Build a simple object eg. house"



2714 home visits conducted to support implementation of the Early Learning programme



KATLEGO'S SUCCESS STORY

Katlego* completed the Siyakwazi Early Learning programme with her grandmother, Mbali* in 2023. She has participated happily in the programme and is the pride of her family growing in leaps and bounds. Mbali says she's had a lot of experience raising children but has seen firsthand the positive impact of age-appropriate stimulation through exposure to Siyakwazi's Early learning programme.

"Siyakwazi instils knowledge and helps us see how interacting with a child is important. My wish Katlego is to grow up and love education." - Mbali

Interaction that involves expression and play are an important part of Early Literacy. Mbali says, "When a child is bathing, Siyakwazi encourages us to add toys in the water so the child can play and learn while doing that, and they say speaking to our children is also important. I used to bathe Katlego, say nothing to her, take her out of the water and get her dressed without interacting with her, so I've really grown also and my mindset has changed."

It's never too early to start reading to a baby and Siyakwazi introduces books into homes at an early age, further strengthening the foundation in Early Literacy.

Mbali says, "She is very interactive when you hold a book and start reading. It is a contrast, because in my days books were only seen at school and that would be the last place you touch a book – school. You'll only see a book the following morning when you go to school. Back then the reading culture was not in our homes.

If Siyakwazi did not exist, the community would be in very desperate need. In our community we are raising our children without knowing the essential basics of raising children. We as the community sometimes just take a child as is and don't realise that we also have instil some skills for the child to grow up well."



MEET THE TEAM

Kaizer shares his experience

Kaizer joined Siyakwazi in 2019 through a Skills Development Learnership programme. He currently supports both Siyakwazi's School Readiness and Inclusion programmes working in ECD centres and supporting home visits. Over the years Kaizer has not only demonstrated strong skills in his work and relationships with families and ECD practitioners, but has also applied himself to further learning and demonstrating flexibility in his role.



"My experience at Siyakwazi has brought kindness, love, joy and patience into my life. To work with children with disability has been an eye-opening journey and the opportunity to learn about myself on a daily basis. I feel blessed knowing what I do is making a difference and an impact on children with disability. As a person with a disability myself I know what it's like growing up not being a "normal kid" to some people. I feel connected with the children I work with and share so much passion. I aspire to be a role model to them so that they can achieve anything they set their minds to. Seeing them happy brings life and so much joy in my life. I support children in their homes through the therapy programmes and Individual Support Plan. I think my biggest achievement has been helping parents understand the disability of their child and what support his/her child needs."



Relationships are crucial to supporting the work that we do and having people who parents can connect with and relate to really makes a huge difference in the effectiveness of our programmes. We are proud of the team that has developed within Siyakwazi over the years. Thank you Kaizer for your commitment to your work and your continued growth within Siyakwazi.

The financial year ending December 2023 presented Siyakwazi with significant hurdles and, like many others, the charitable organisation is not immune to the challenges of the socio-economic environment within which it operates. Despite experiencing a downturn in revenue and net surplus compared to the previous year, Siyakwazi has demonstrated exceptional resilience and commitment to its purpose and mission.

R3 047 357

invested in our programmes to support children with disabilities & barriers to learning

Income generating activities: Includes sale of goods through Siyakwazi's second hand shop. Hosting fees acquired for learnerships and venue hire for training. Training income done with other organisations.

Donations: Monthly and Once off donations from individuals and businesses.

Programme & Operational Grants: Annual funder grant agreements. Siyakwazi was able to secure an additional 5 funders in 2023, as well as maintain key previous funding relationships from 2022.

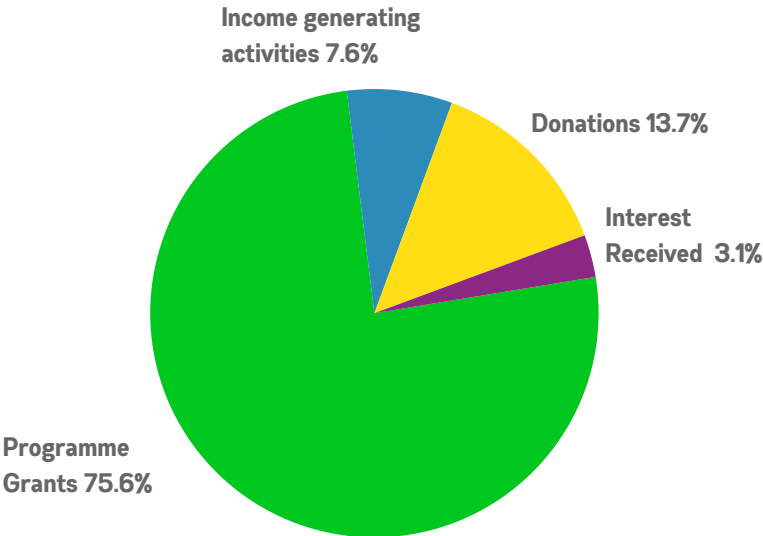


Fig 1.1. Sources of Revenue

"I am continually impressed by the professionalism and diligence with which Siyakwazi's management team handles the finances of the organisation. Siyakwazi's astute oversight of budgets, cash flows, and new funding opportunities has been instrumental in navigating the complexities of the economic landscape. Looking ahead, I am optimistic about the prospects for Siyakwazi in 2024. I am confident that it will not only weather any remaining storms but also emerge stronger and more resilient than ever before." - Graeme Gawler, SAPT Solutions

Finance

58%

Increase in income generating activities from the previous year, including investment income, sales & rentals

17

Grant agreements have supported Siyakwazi's programme implementation in 2023

R70 825

Generated through sales from Siyakwazi's second hand shop

OUR 2024 GOALS

In addition to reviewing the recommendations based on the Research findings, the team look forward to including the below goals in our work in 2023

- Further refine Siyakwazi's M&E processes, tools and management of data for all programmes in order to inform programme quality, performance management and measure impact accurately.
- Increase Respite day care support for children with disabilities 7+ for 15 children at least 2ce a month for every child.
- Implement a pilot for scaling inclusive practices into ECD network for 20 ECD centres in partnership with Impande South Africa.
- Continue expansion into KwaXolo tribal authority, adding 2 ECD centres, 2 schools and children with disabilities in homes.
- Consolidate Safeguarding Culture within Siyakwazi, adopting protocol and procedures to support children, families, Siyakwazi staff and Siyakwazi as an organization.
- Renovate the Resource centre courtyard to accommodate a changing area for Respite sessions, as well as a new reception area. The current reception will make way for more office space needed.



A special Thank you to Franc Moulton for capturing our programmes in action so beautifully. Thank you to our funder Even Ground for supporting this to happen.



RB HAGART



ALEX FORBES
COMMUNITY
TRUST



MONTHLY &
ONCE
OFF DONORS



RES
FOUNDATION



CSI FUNDERS



Wetterhahn Foundation
MAKING A DIFFERENCE

FULTON TRUST

Director
Cathy Mather-Pike

Tel +27 71 274 6285
Email cathy@siyakwazi.org

Physical Address
Bhambula, Kwanzimakwe
KwaZulu-Natal, South Africa

Postal Address
PO BOX 1537
Port Shepstone, 4240
KwaZulu-Natal, South Africa

N.P.O number
118-910

PBO number
930047588

